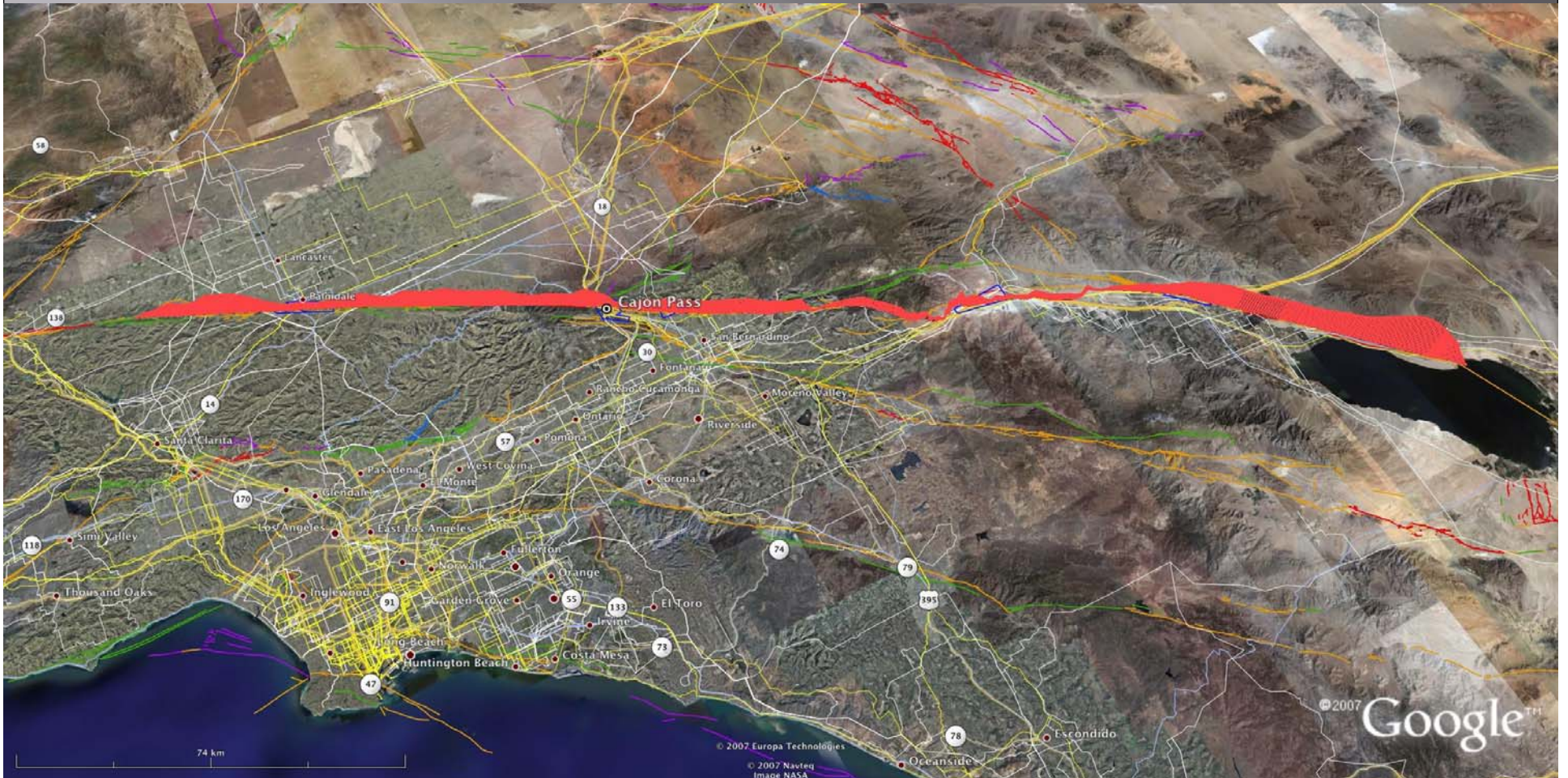


# LIFELINE READINESS AND FAULT CROSSINGS PANEL

Michael Reichle

California Geological Survey, retired

- ▣ Lifelines are the veins and arteries of the Los Angeles region. Pipelines, water conveyance infrastructure, highways, railroads, fiber optics, and utility transmission lines move energy, goods, information, and people within, into and out of southern California.
- ▣ These lifelines are critical to the economy of the area, indeed to the economy of the nation.



**Multi-Hazard Demonstration Project Landslide  
Deformation Analysis Location Map  
Cajon Canyon Study Area**

